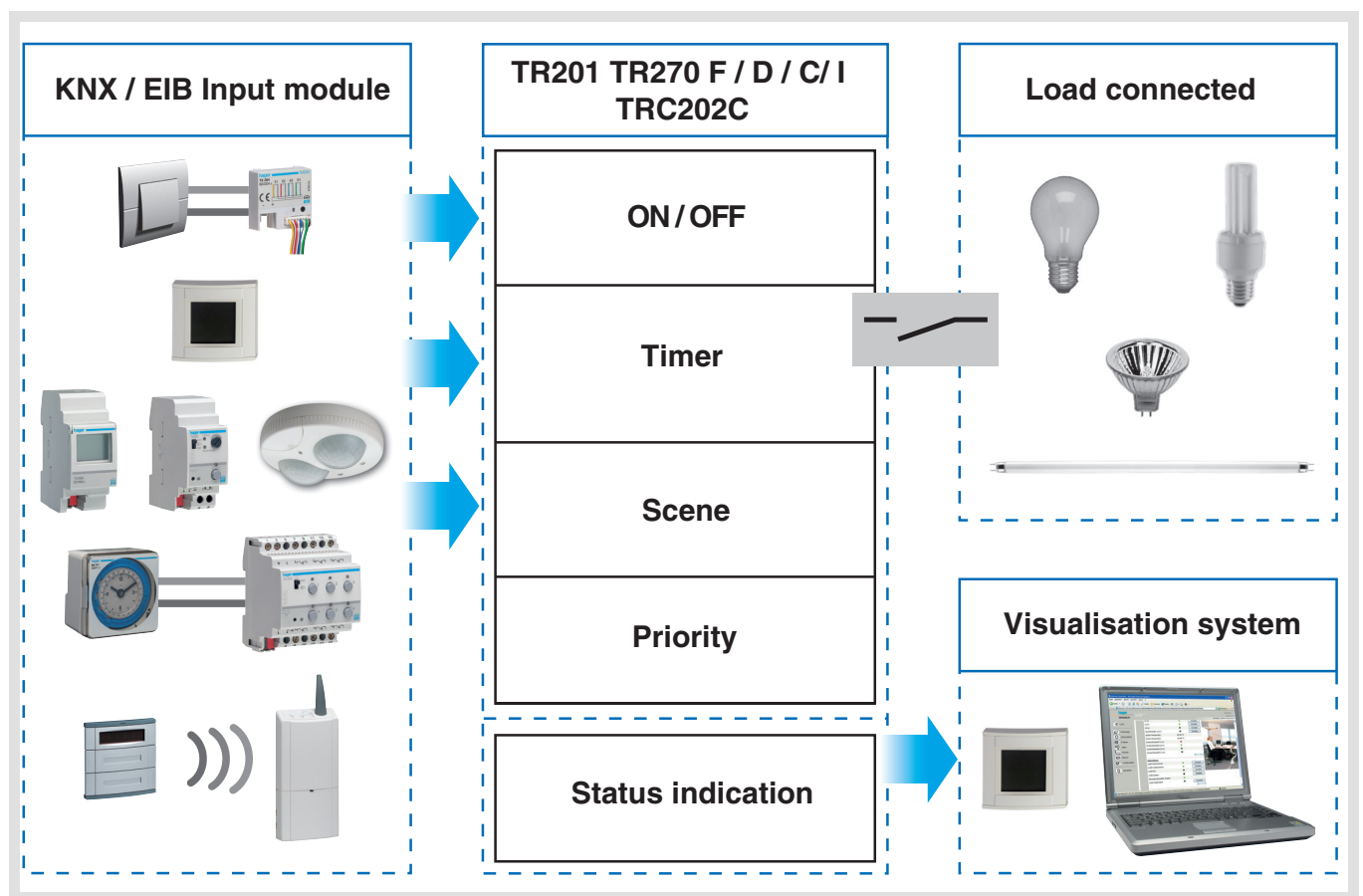


# Tebis application software

<ul style="list-style-type: none"> <li>📁 Catalog</li> <li>📁 RF devices           <ul style="list-style-type: none"> <li>📁 Dimmers</li> <li>📁 Inputs</li> <li>📁 Inputs / Outputs</li> <li>📁 Kallysta</li> <li>📁 Kallysto</li> <li>📁 Media coupler</li> <li>📁 Outputs</li> <li>📁 Plug adaptor</li> <li>📁 Push buttons</li> <li>📁 Remote controls</li> <li>📁 Shutters / blinds</li> </ul> </li> </ul>	

## Radio output products description

	Product reference	Product designation
	TR201	1-output Lightingembedded RF
	TR270F / D / C / I	Plug adaptor ON / OFF RF
	TRC202C	2-output Lighting wall mounted RF



## Summary

1. Function Description .....	3
2. Configuration and settings .....	3
2.1 Objects List .....	3
2.2 Parameter setting .....	3
3. Main characteristics .....	5
4. Physical addressing .....	5
5. Factory reset .....	5

## 1. Function Description

The application software allows you to configure individually the outputs.

The main functions are the following:

### ■ ON / OFF

The ON / OFF function is used to switch a lighting circuit ON or OFF. The command may come from switches, pushbuttons or automatic controls.

### ■ Status indication

The Status indication function displays the status of the output contact. It allows a toggle function to be created by sending the status indication to each push button of the group.

### ■ Timer

The Timer function is used to switch a lighting circuit ON or OFF for an adjustable time. Depending on the operation mode selected, the output may be delayed for ON or OFF switching. The Timer function can be interrupted via a long key press before the time delay expires. An adjustable cut-off pre-warning indicates the end of the delay time by inverting the output status for 1 sec.

### ■ Priority

The Priority function allows overriding an output to a definite status, ON or OFF. This command has the highest priority. No other command is taken into account if a priority is active. Only a priority end command re-enables the other commands. Application: Maintaining lighting ON for safety reasons.

### ■ Scene

The Scene function groups a set of outputs. These outputs can be set to an adjustable predefined status. Pressing a single push button activates a scene. Each output may be integrated into 8 different scenes.

## 2. Configuration and settings

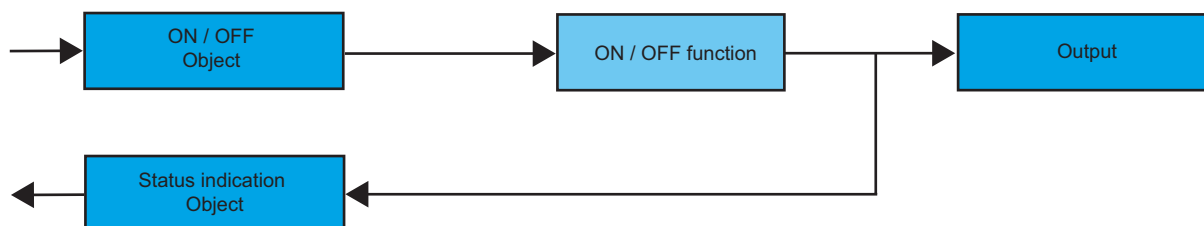
### 2.1 Objects List

Number	Name	Object Function	Description	Group Addresses	Length	C	R	W	T	U	Data Type	Priority
0	Output 1	ON / OFF			1 bit	C	R	W	-	-		Low
1	Output 1	Timer			1 bit	C	R	W	-	-		Low
2	Output 1	Priority			2 bit	C	R	W	-	-		Low
3	Output 1	Scene			1 Byte	C	R	W	-	-		Low
4	Output 1	Status indication			1 bit	C	R	-	T	U		Low

### 2.2 Parameter setting

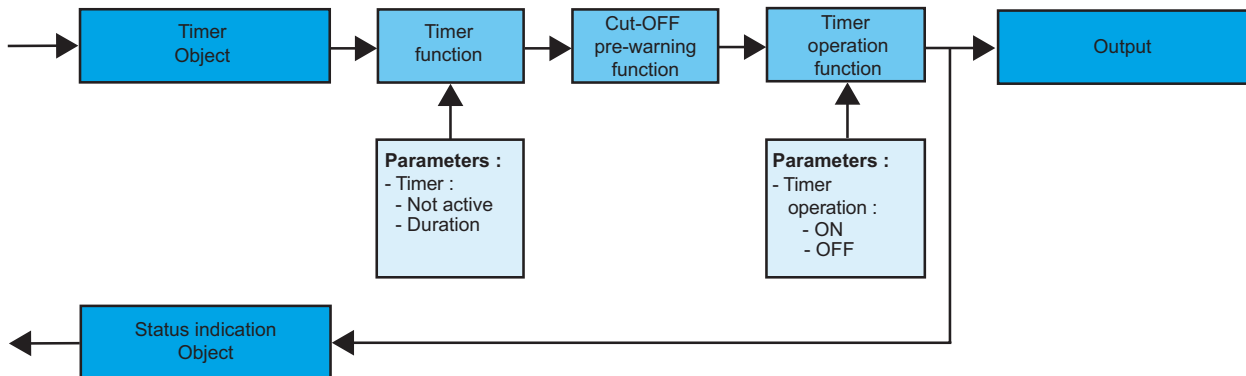
#### ■ ON / OFF functions and Status indication

The ON / OFF function is used to switch the output ON or OFF. The status of the output depends on the activation of other functions and of the associated parameters: priority, timer or scene. The status of the output is indicated on the bus by the **Status indication** object.



### ■ Timer function

The Timer function is used to switch a lighting circuit ON or OFF for an adjustable time. The function is started by the **Timer** object.

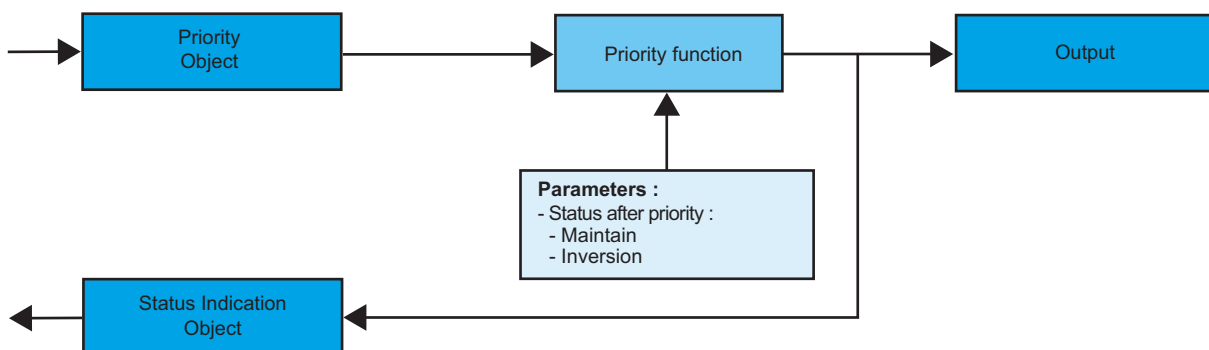


#### → Parameters

Parameter	Description	Values
Timer	This parameter defines the length of the delay time.	Not active, [0.5 s 24 h]. Default value: 3 min.
Timer operation	This parameter defines whether the delay time triggers an ON or an OFF status.	ON, OFF. Default value: ON.

### ■ Priority function

The Priority function allows the outputs to be forced and maintained at a definite ON or OFF status imposed by the input. This function is started by the **Priority** object. Priority is the function with the highest priority. Only a priority-end control ends the priority and re-authorizes the bus commands to be taken into consideration.



→ Description of the **Priority** object

Value	Output behaviour
00	Priority end
01	Priority end
10	Priority OFF
11	Priority ON

→ Parameter

Designation	Description	Value
Status after priority	This parameter defines the output status to be applied at the end of the Priority.	Maintain, Inversion. - Maintain: Maintains the output at the status active during Priority. - Inversion: Inversion of the output's status with regards to the status active during Priority (ON to OFF and OFF to ON). Default value: Maintain.

### 3. Main characteristics

Product	TR201	TR270C / D / F / I	TRC202C
Max. number of group addresses	32	32	32
Max. number of links	50	50	50
Parameters	4	4	7
Objects	5	5	10

### 4. Physical addressing

Physical addressing of the radio products is performed from the TR131 plug-in. In the **Physical addressing** menu, select **Physical addressing**, then following the instructions which appear on the screen.

### 5. Factory reset

The factory reset of the radio products is performed from the TR131 plug-in:

- The device belongs to the installation (known by the TR131): In the **Physical addressing** menu, select **Factory reset** and then follow the instructions which appear on the screen.
- The device does not belong to the installation (unknown by the TR131): In the **Physical addressing** menu, select **Product outside installation**, select **Two-way product** then follow the instructions which appear on the screen.

